

UNITED STATES PUBLIC LAND SURVEY CORNER CERTIFICATE OF

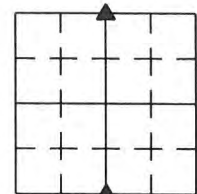
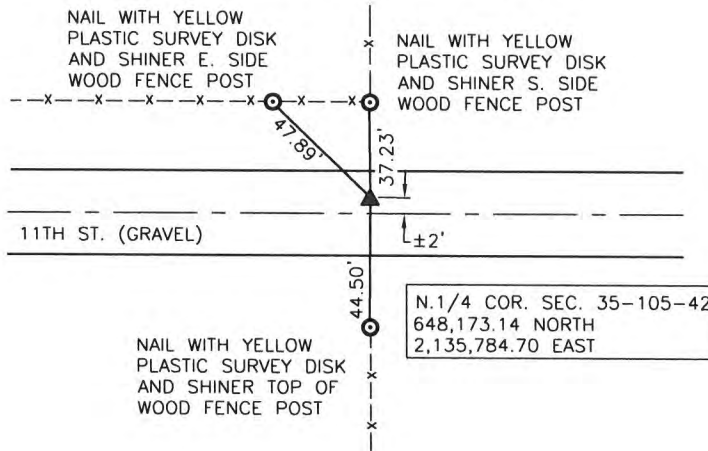
Land Survey Monuments situated in Section 35, Township 105, Range 42, of the Fifth Principal Meridian, MURRAY County, MINNESOTA.

Monument Description and Remarks: N.1/4-NO PREVIOUS RECORDING, S.1/4-MONUMENT DESTROYED

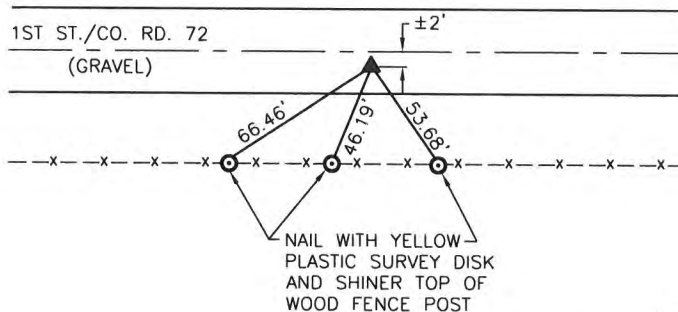
S.1/4 CORNER - SET 1/2" X 24" REBAR WITH YELLOW SURVEYOR'S I.D. CAP NO. 51702, ±2' SOUTH OF C.L. OF GRAVEL ROAD, 4" BELOW GRAVEL SURFACE. MONUMENT SET USING TIES FROM CERTIFICATE OF LOCATION OF GOVERNMENT CORNER, DATED 7/05/06.

N.1/4 CORNER - FOUND 1/2" DIA. REBAR WITH YELLOW SURVEYOR'S I.D. CAP STAMPED "MARTIN 12967", ±2' NORTH OF C.L. GRAVEL ROAD, 11" BELOW GRAVEL SURFACE. MONUMENT FALLS IN LINE WITH FENCES NORTH AND SOUTH.

PLAN - VIEW



SEC. 35-105-42
COORDINATES SHOWN:
MN STATE PLANE
COORDINATE SYSTEM,
SOUTH ZONE,
NAD 83 (2011), EPOCH
2010.00, U.S. SURVEY FOOT



S.1/4 COR. SEC. 35-105-42
642,934.23 NORTH
2,135,603.25 EAST

ALL DISTANCES SHOWN ARE HORIZONTAL

I hereby certify that this land surveying document was prepared and the related survey work was performed by me or under my direct personal supervision and that I am a duly licensed Land Surveyor under the laws of the State of Minnesota.

Signature: Tim M. Laleman 7-28-2015

Name typed or printed: TIM M. LALEMAN

Date: _____ LIC. No. 51702



SEAL

Corners	Section	Twp	Range
S.1/4 COR.	35	105	42
N.1/4 COR.	35	105	42

STATE OF MINNESOTA, } ss.
COUNTY OF MURRAY, }

I hereby certify that the within Instrument was filed in this office for record on the 3RD day of AUGUST A.D. 20 15 at 9:00 o'clock A. M., and was duly recorded as Document No. _____

Guelyn C. Larson